

SAVE UP TO  
**80%**  
ON YOUR HOT  
WATER BILL.



THE FUTURE  
OF HOT WATER  
IS HERE

AIR-SOURCE CO<sub>2</sub> HEAT PUMP  
HOT WATER SYSTEM



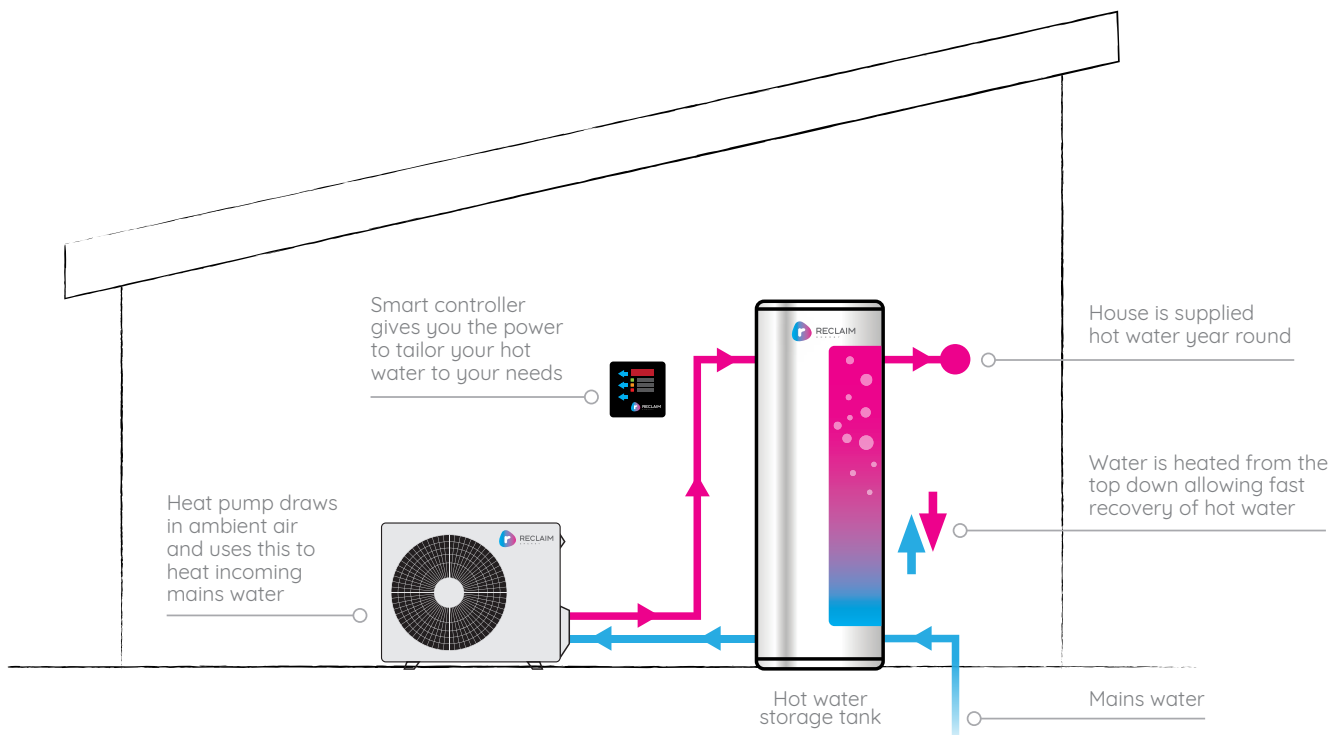
**RECLAIM**  
ENERGY

# HEAT PUMPS EXTRACT RENEWABLE HEAT FROM THE AIR WHICH MAKES HEATING YOUR HOT WATER MORE EFFICIENT, LESS COSTLY AND MORE FRIENDLY FOR THE ENVIRONMENT.

An air to water heat pump is a very efficient device that uses heat in the ambient air for hot water production. Its heat energy output is about three to five times as high as the electricity input required to run it.

The Reclaim Energy CO2 air source heat pump, produces domestic hot water at 63°C without requiring an electrical backup and “even at an outside temperature of -10°C”.

- **Industry leading technology**
- **Naturally environmentally friendly**
- **Fully Solar PV compatible**
- **Industry first smart controller**
- **15 year warranty\***
- **Japanese Compressor**
- **Australian made tank & controller**
- **Australian Owned**
- **Global Warming Potential refrigerant rating of 1 indicating that the system is the most environmentally friendly hot water system in the market**





## TODAY'S MOST ENERGY EFFICIENT HOT WATER

Enjoy massive long-term energy savings. With Reclaim Energy Heat Pump Hot Water you can save up to 80% off your hot water bill. Why? Because the system uses less energy and has a higher thermal output than electric or gas water heaters. The top-down Heat Pump return heating design ensures quick water recovery. The system is whisper quiet and up to 200% more environmentally friendly than systems that use standard refrigerants.



## FULLY SOLAR PV COMPATIBLE

The Reclaim Energy CO2 Heat Pump is one of the first truly smart hot water systems available on the market. In essence, it works like a 3-4 kWh battery for your home. Its controller has been designed to be complimentary to a households PV solar system thereby allowing householders to take advantage of any surplus energy they are creating, before it gets exported back to the grid.

The system qualifies for all the Solar Hot Water rebates (STC's, VEEC's, REES). With a payback period of 3 years\* and up to 15 years Warranty\*\* Making it the smart energy hot water solution.



## PUTTING THE POWER IN YOUR HANDS

Our interactive controls and monitoring, with 5 presets, allows households to take control over their energy generation and management at the touch of a button. The system is designed to allow householders to manage their energy consumption in line with their needs whether that be by running the system when excess energy is being produced (for those people with Solar PV) or on a continuous or Off-peak mode of operation. Our single shot boost guarantees that no matter what option you choose you will never be without hot water.



CUSTOM  
DESIGNED FOR  
AUSTRALIAN  
CONDITIONS







## VALUE FEATURES

- Average running cost of \$360 per annum\*.
- Estimated payback period of 3 years.
- Warranty up to 15 years\*\*.
- Qualifies for all Solar Hot Water rebates.



## ENERGY SAVING FEATURES

- Top-down Heat Pump return heating for rapid hot water recovery.
- Average annual energy saving of up to 80%.
- Has the ability to heat hot water from as little as \$1 per day.
- Average daily consumption of 3 kWh per day.
- Highest coefficient of performance (COP) in the industry – COP = 6.02 at 32°C ambient condition.



## PRODUCT FEATURES

- Custom designed for Australian conditions and environment. With built-in frost control
- Glass Lined Enamel and Stainless Steel tank options.
- Stainless Steel available in tall and squat tank for sub-floor installs.
- Split system design enables flexible installation options.
- Available in 160L, 250L, 315L and 400L in Glass Lined and Stainless Steel.
- Whisper quiet operation level at 37 dB.
- CO2 refrigerant ideally suited to excel in cold weather conditions.
- CO2 refrigerant naturally environmentally friendly. (Up to 200% more environmentally friendly systems using standard refrigerant).
- Built in frost and freeze protection
- No backup element required



## SMART FEATURES

- Designed to use excess PV generation rather than exporting it to the grid.
- One-shot boost function for worry free hot water supply.
- Smart controller allows you to take control over their energy costs and consumption – 5 settings:
  1. Continuous operation mode;
  2. Use during solar daytime hours; and
  3. Use during Off-peak tariff and solar daytime hours.
  4. Off peak tariff time of use
  5. Single shot boost function
- Optimised for time of use tariffs.
- Supports real-time customer care from our dedicated after sales team.

\* Savings may vary based on individual circumstances.

\*\* For stainless steel tanks



## Why Reclaim Energy?

At Reclaim Energy, we believe in the goal of a sustainable lifestyle and the potential for living off-grid. With over 15 year's experience, we are passionate about the potential of energy efficient and environmentally-friendly hot water solutions, tailored to Australian requirements.


Through our commitment to product innovation and next generation technology, we truly believe we have designed a hot water system that is one of the most energy efficient and flexible solutions available in Australia today.

## Our people are here for you.

We have high quality resellers all around Australia, so talk to one of our specialists and start saving today.

YOUR RECLAIM ENERGY DEALER

1300 383 815  
HELLO@RECLAIMENERGY.COM.AU  
**RECLAIMENERGY.COM.AU**

facebook.com/CO2HeatPump   
instagram.com/reclaimenergy 



**RECLAIM**  
ENERGY